



TRYON, NORTH CAROLINA

*Where the mountains and the good life begin*

## HEMLOCK TRAIL ... WHITE OAK MOUNTAIN

Location: Columbus, NC   List Price: \$1,850,000   Acreage: 146+ acres   NCM 3148161



This stunning property will tug at your heartstrings! On almost 150 acres, this is a one-of-a-kind offering: unbelievable mountain views at every turn; cascading waterfalls; maintained walking trails; unique rock outcroppings, attractive log home and picnic area with cabinette and large party building . . . the property of your dreams!

A scenic driveway with custom stone walls leads to this charming 2 bedroom, 3.5 bath log home. The arched front door opens to the great room with beading wood-beamed ceiling, wide plank pine floors, gas log fireplace, shuttered windows and custom built-in entertainment center.

A picnic area is at the base of the bold "Horse Creek" waterfall and has a Party Building with fireplace. An adorable log "cabinette" with mini-kitchen, heat/AC and half bath — a perfect studio space.

[www.TryonHorseFarms.com](http://www.TryonHorseFarms.com)

## Main House: First Floor

- Beautiful Arched Front Door entrance w/large clerestory window above
- Great Room w/soaring wood beamed ceilings, wide plank pine floors and walls throughout, gas log fireplace, shuttered windows, ceiling fan, custom built-in entertainment center (includes all electronic equipment; wired throughout w/21 speakers)
- Kitchen w/silestone counters, breakfast bar, custom cabinetry, wall mounted TV (conveys) stainless steel appliances including a smooth top range, builtin microwave, dishwasher and refrigerator. There is a large opening over the sink to the sunroom and long range views
- Dining Area w/custom builtin china cabinet opens to the sunroom
- Delightful Sunroom w/large windows, exquisite views, wall mounted TV (conveys) and glass doors to screened porch
- Screened Porch (10 x 23) w/awesome views, great for relaxing and entertaining; directly accessed from the sunroom, master bedroom and hallway
- Walkin pantry closet
- Laundry / Utility Room w/pocket door, window, builtin cabinets w/counter for folding, upper storage cabiners, utility sink and front loading washer/dryer set on built-in pedestal.
- Powder Room w/pocket door, window w/views, pedestal sink.
- Large walkin utility closet
- Coat Closet
- Exterior door to BBQ deck (8 x 8) w/ stairs to yard below, door to lower level recreation room/man cave
- Door to finished 2car garage w/2 automatic doors, slip resistant floor finish, builtin storage cabinets, lots of windows and 2nd door to covered breezeway and separate 10 x 10 storage building / workshop
- 2nd Hallway off the Great Room (opposite side) that leads to an exterior door w/direct access to the screened porch
- Master Suite w/cathedral beamed ceiling, good natural light from the wall of windows and glass doors leading out to the screened porch and views, ceiling fan and spacious ensuite master bath
- Master Bath w/large single vanity, claw foot tub, separate shower, linen closet, shuttered windows and walkin closet w/custom builtin cabinetry w/drawers and shelves

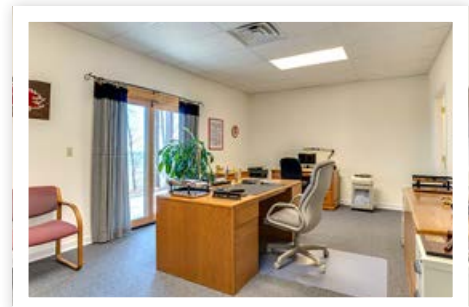
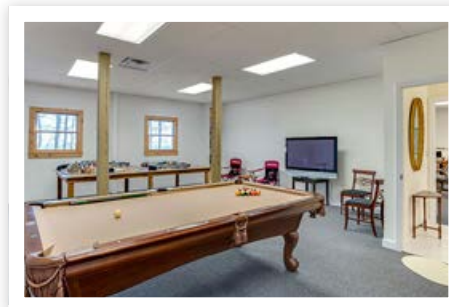


## Second Floor

- Lovely staircase w/wood and iron railing continues through the loft area
- Spacious comfortable loft w/wide plank pine floors, walls and ceiling, (continues throughout the second floor) shuttered windows, custom builtin shelves, ceiling fan and wall mounted TV (conveys)
- Large storage area w/loft access has pine floors; finished 1st storage area (approx. 10x20), 2nd storage area (irregular, approx 14x24) partially finished w/ vaulted ceiling, ceiling fan and windows at either end

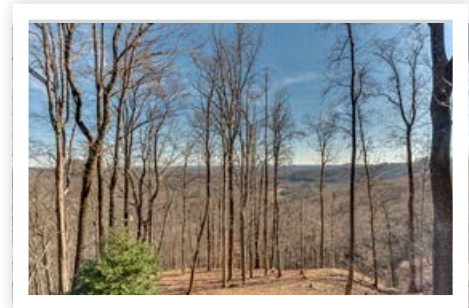


- Second Floor Master Suite / Guest Bedroom w/ cathedral beamed ceiling, ceiling fan, large windows, built-in shelves, walk-in closet w/custom built-in cabinetry w/drawers / shelves, ensuite bath and glass doors to a charming balcony (6 x 12) w/stunning views
- En Suite Bath w/beamed angled ceiling, shuttered window, double vanity, jet tub, separate shower, built-in dressing / makeup counter, additional storage cabinet w/counter space



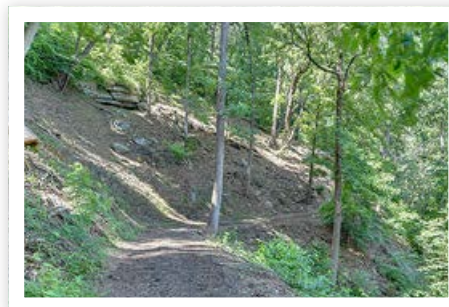
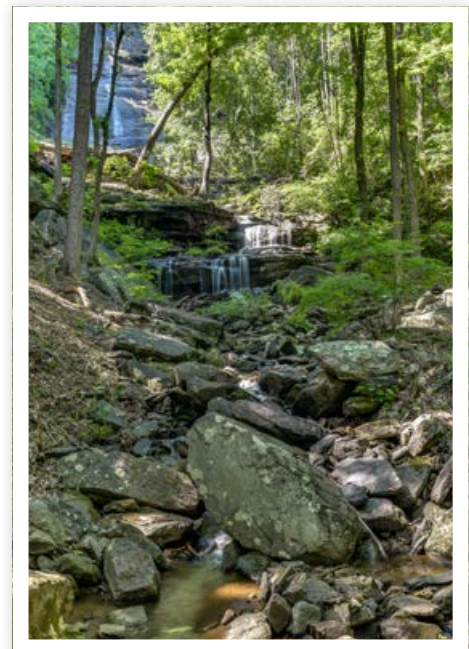
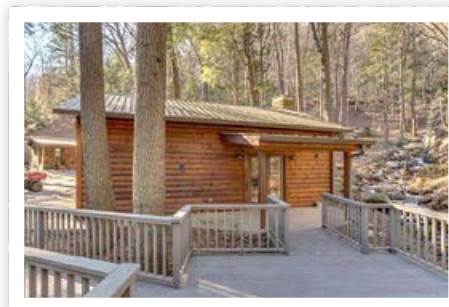
## Lower Level/Basement

- Pine stairs lead to a roomy lower level hallway / landing area w/tile floor
- Spacious Home Office w/carpet, high drop-in ceiling, large closet under the stairs, ensuite bath w/tanning room, and glass doors leading out to a covered patio (23 x 10) w/lovely stone walls
- En Suite Bath w/tile floor, large storage cabinet w/ counter space, additional single vanity, shower, linen closet and pocket door to tanning room (8x13)
- Huge Recreation Room / Man Cave (21x28) w/carpet, windows w/views, exterior door leading to yard and stairs up to BBQ deck
- Mechanical Room w/concrete floor (8x16), unfinished and accessed from Recreation Room) includes: 71 Gallon Electric Water Heater; Well Pressure Tank; Water Filtration System; Propane Gas Furnace; Central Vacuum System
- Lower Level Garage / Storage Room (unfinished) w/ concrete floor, storage shelves, automatic generator and single garage door, currently houses large ATV to travel around property



## Additional Property Features

- The automatic gate leads to the majestic Picnic Area w/ bold 'Horse Creek' waterfall cascading down the ravine w/twists and turns next to a large party building w/ adjoining deck and stone terrace
- Party Building (24x30) w/double garage door, single exterior door, and glass door that leads to covered porch and deck. Inside features a stone gas log FP w/ stone hearth, additional propane wall heater, original exposed stone walls (partial) & built-in storage cabinets
- Lovely stone walkway from front of party building leads to charming stone terrace near the water's edge
- Adorable log 'cabinette' (10x12) w/delightful 5x12 covered front porch entrance features a kitchen w/4-burner electric range, sink, cabinets/counter space, mini fridge, Heat/AC wall unit & convenient half bath
- Walking trails, gorgeous waterfall and beautiful land make this a beloved destination for family and friends.



## LILLIE BROWN

*Distinctive Equestrian Properties and Upscale Residential Homes*

Town and Country Realtors, 951 S. Trade Street, Tryon, NC 28782

LHBrown@windstream.net, 864-978-9465 Cell, 828-894-3861 Evening

[www.tryonhorsefarms.com](http://www.tryonhorsefarms.com)